



THE LOFTS OF DEL RAY

AVAILABLE 11-11
MOUNT VERNON AVENUE, ALEXANDRIA, VA

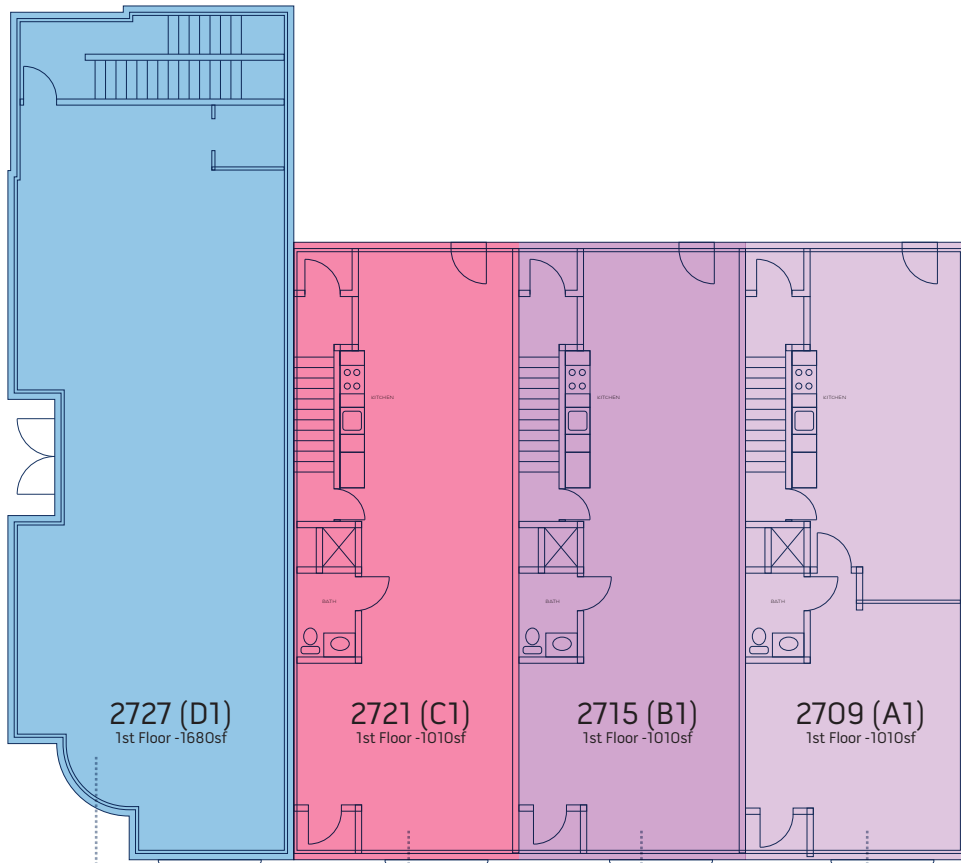


Welcome to THE LOFTS OF DEL RAY, a distinctive, mixed-used, condominium community with residential and commercial space for creatives and professionals.

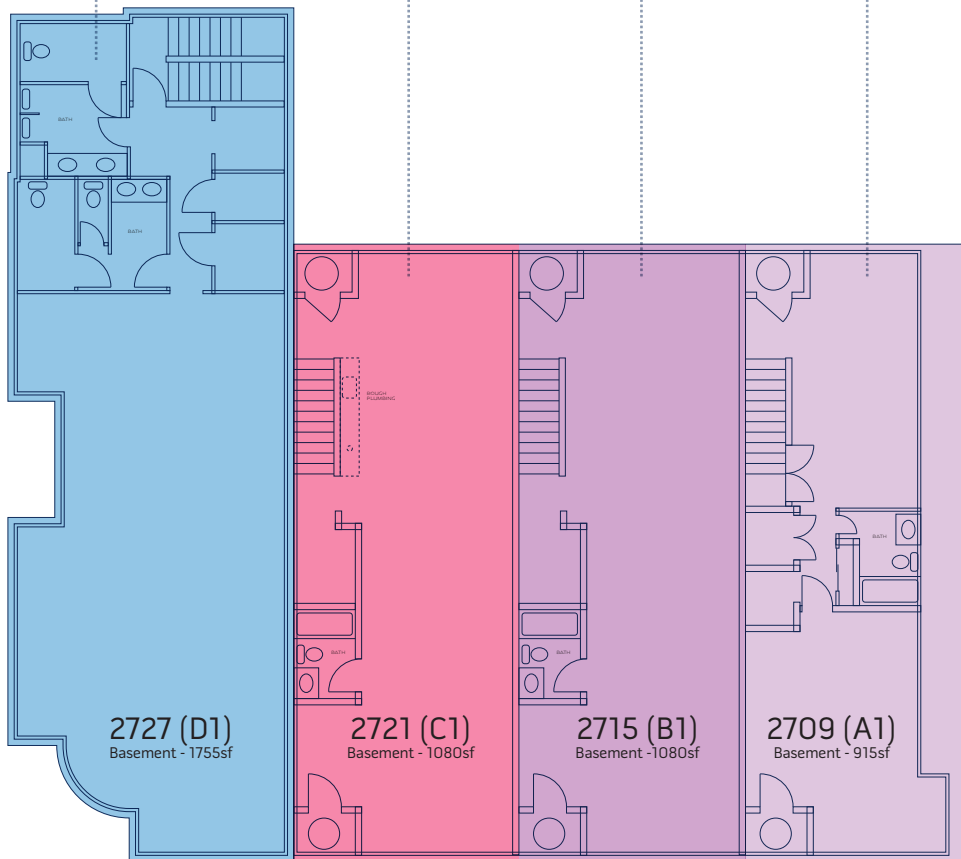
Built with 21st century sustainable building practices in design and construction, these rare, loft-style properties feature geothermal heating & cooling, ten to sixteen-foot ceilings, open floor plans, balconies, fireplaces, off-street parking and ample storage - including bicycle storage.

With its diversity of restaurants, shops, artist studios, bike trails and farmer's market, The Mount Vernon Avenue corridor has quickly become one of the most desired neighborhoods in the DC area for young professionals and families.

For more information visit www.TheLoftsOfDelRay.com



1ST FLOOR

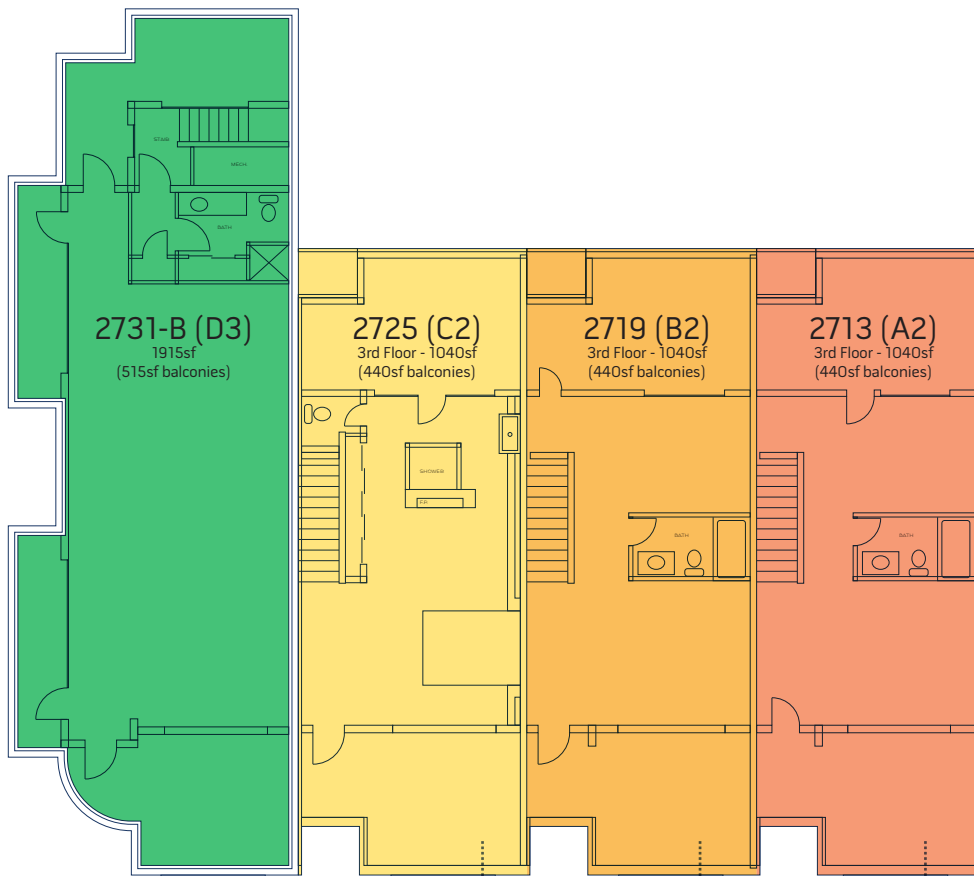


BASEMENT

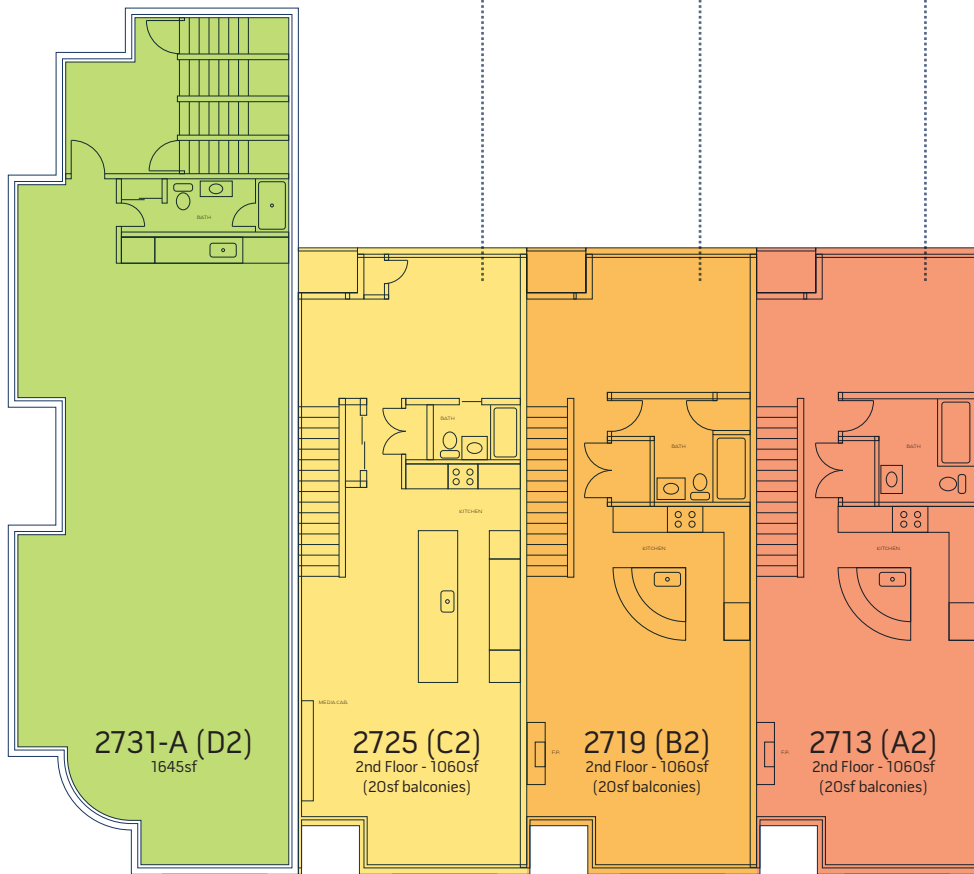
RAYMOND AVENUE

MT. VERNON AVENUE

..... SAME UNIT



3RD FLOOR



2ND FLOOR

RAYMOND AVENUE

MT. VERNON AVENUE

..... SAME UNIT



UNIT DIMENSIONS*

A1 BASEMENT

Bedroom: 15'x17'
Bath: 8'x5'
Bedroom: 22'x11.5'
Mechanical: 4.5'x4'
Laundry: 4'x5'

A1 FIRST FLOOR

Kitchen/Dining: 14.5'x30'
Office/Living: 21'x18.5'
Bathroom: 10.5'x5'
Upper Storage: 5'x7'

A2 SECOND FLOOR

Kitchen: 12'x12'
Living/Dining: 18'x19.5'
Studio/Bedroom: 12.5'x12.5'
Bathroom: 8'x8.5'
Laundry: 3'x5'

A2 THIRD FLOOR

Bedroom: 10'x15'
Bedroom: 12.5'x18.5'
Bathroom: 5.5'x10'
Deck 1: 13.5'x12'
Deck 2: 13.5'x12'

B1 BASEMENT

Office/Bedroom: 52'x15'
Mechanical: 5'x6.5'
Bathroom: 7.5'x5'

B1 FIRST FLOOR

Kitchen/Dining: 15'x24'
Bathroom: 11'x5.5'
Living: 28'x13.5'
Entry: 5.5'x12.5'

B2 SECOND FLOOR

Kitchen: 12'x12'
Living/Dining: 18'x19.5'
Studio/Bedroom: 12'x12.5'
Bathroom 8'x9'
Laundry: 3.5'x5.5'

B2 THIRD FLOOR

Bedroom: 10'x15'
Bedroom: 12.5'x18.5'
Bathroom: 5.5'x10'
Deck 1: 13.5'x12'
Deck 2: 13.5'x12'

C1 BASEMENT

Open: 19'x10' ; 14'x42'
Bathroom: 6.5'x5'
Mechanical: 6.5'x5'

C1 FIRST FLOOR

Open: 19'x12' ; 14'x40'
Bathroom: 6.5'x5'
Kitchenette/Utility: 6.5'x5'

C2 SECOND FLOOR

Living: 16'x19'
Kitchen/Dining: 15'x19'
Bath: 5'x7'
Studio/Bedroom: 12.5'x12'

C2 THIRD FLOOR

Bedroom: 19'x19'
Bath: 10'x19'

D1 BASEMENT

Open: 24'x49'
Mechanical: 6'x6'
Electrical: 4'x6'
Elevator shaft: 5' 5"x6'
Men's room: 13.5'x9'
Women's room: 13'x9' 5"

D1 FIRST FLOOR

Open: 24'x65'

D2 SECOND FLOOR

Bathroom: 11.5'x6'
Kitchen: 3'x15'
Laundry: 3'x6'
Open: 52'x24' 6"